

Common Plant Problems



Virginia Cooperative Extension

Virginia Tech • Virginia State University

www.ext.vt.edu

Damping-off

- Germinating seeds & seedlings
- Spring disease
- Wet conditions
- **Symptoms:**
 - Water-soaked lesion at soil-line
 - Top quickly wilts & dies



Virginia Cooperative Extension

Virginia Tech • Virginia State University

www.ext.vt.edu

Slug Damage

- Feed on plants
- May eat entire seedling
- Leave slime trail

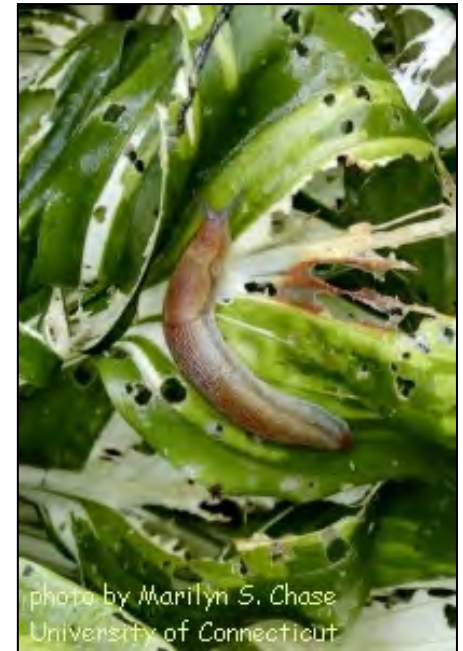


photo by Marilyn S. Chase
University of Connecticut

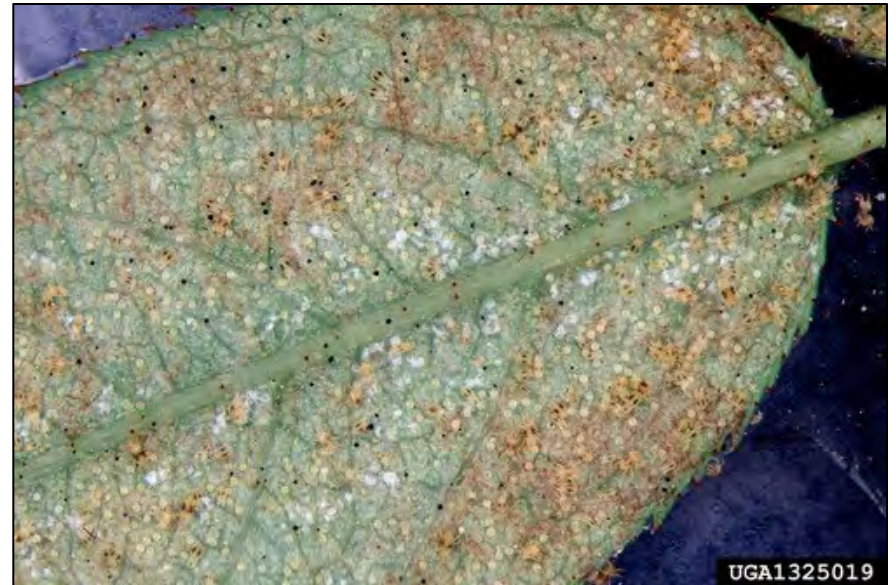


Virginia Cooperative Extension

Virginia Tech • Virginia State University

www.ext.vt.edu

Spider Mites



Virginia Cooperative Extension
Virginia Tech • Virginia State University

www.ext.vt.edu

Leaf Spots

Fungal

- Dry appearance
- Tan or gray in color
- Dark “pimples”



Bacterial

- Dark green, water-soaked
- Yellow border

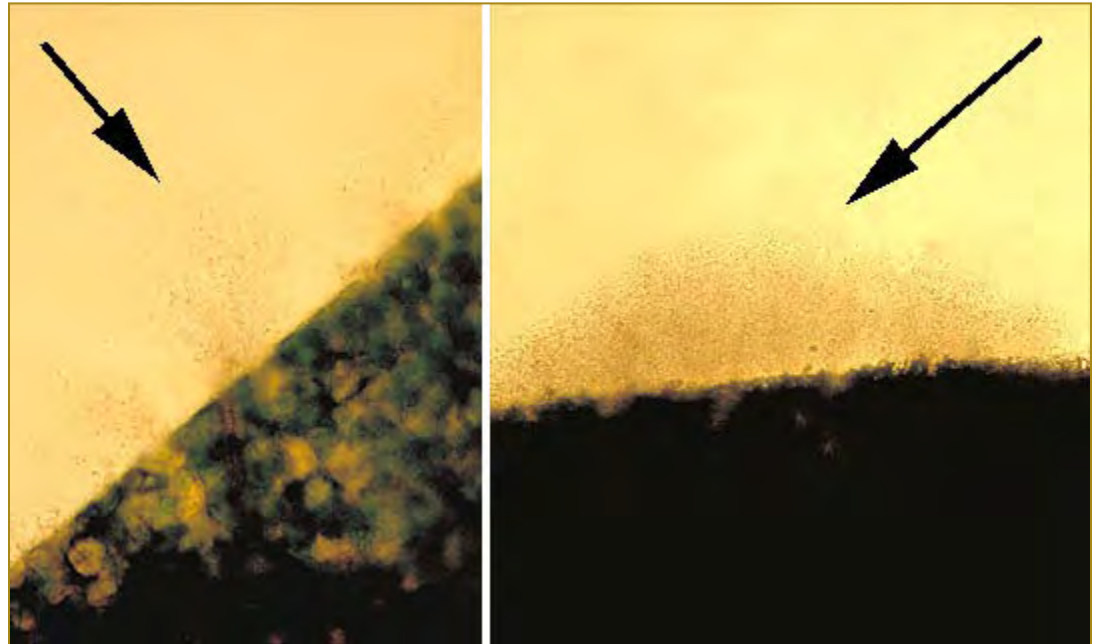


Virginia Cooperative Extension

Virginia Tech • Virginia State University

www.ext.vt.edu

Bacterial or Fungal?

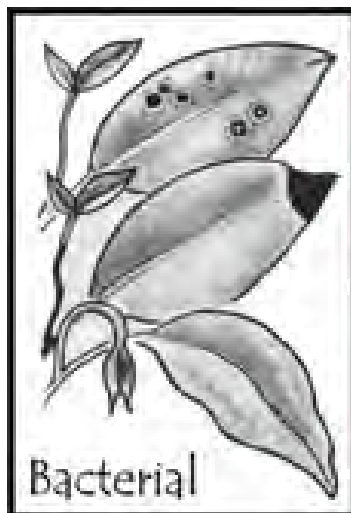


Virginia Cooperative Extension

Virginia Tech • Virginia State University

www.ext.vt.edu

Who caused this leaf spot?



← spots

← soft spots

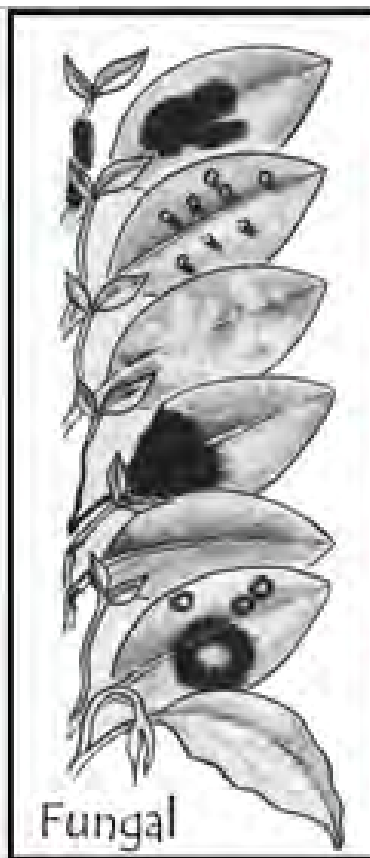
← wilts



← mottling

← distortion

← dwarfing



← sooty
molds

← rusts

← mildews

← rots

← cankers

← spots

← wilts



Virginia Cooperative Extension

Virginia Tech • Virginia State University

www.ext.vt.edu

Poor Pollination



Herbicide Injury



Virginia Cooperative Extension
Virginia Tech • Virginia State University

www.ext.vt.edu

Sapsucker/Woodpecker



Virginia Cooperative Extension

Virginia Tech • Virginia State University

www.ext.vt.edu

Corn Smut



Virginia Cooperative Extension

Virginia Tech • Virginia State University

www.ext.vt.edu

Downy Mildew

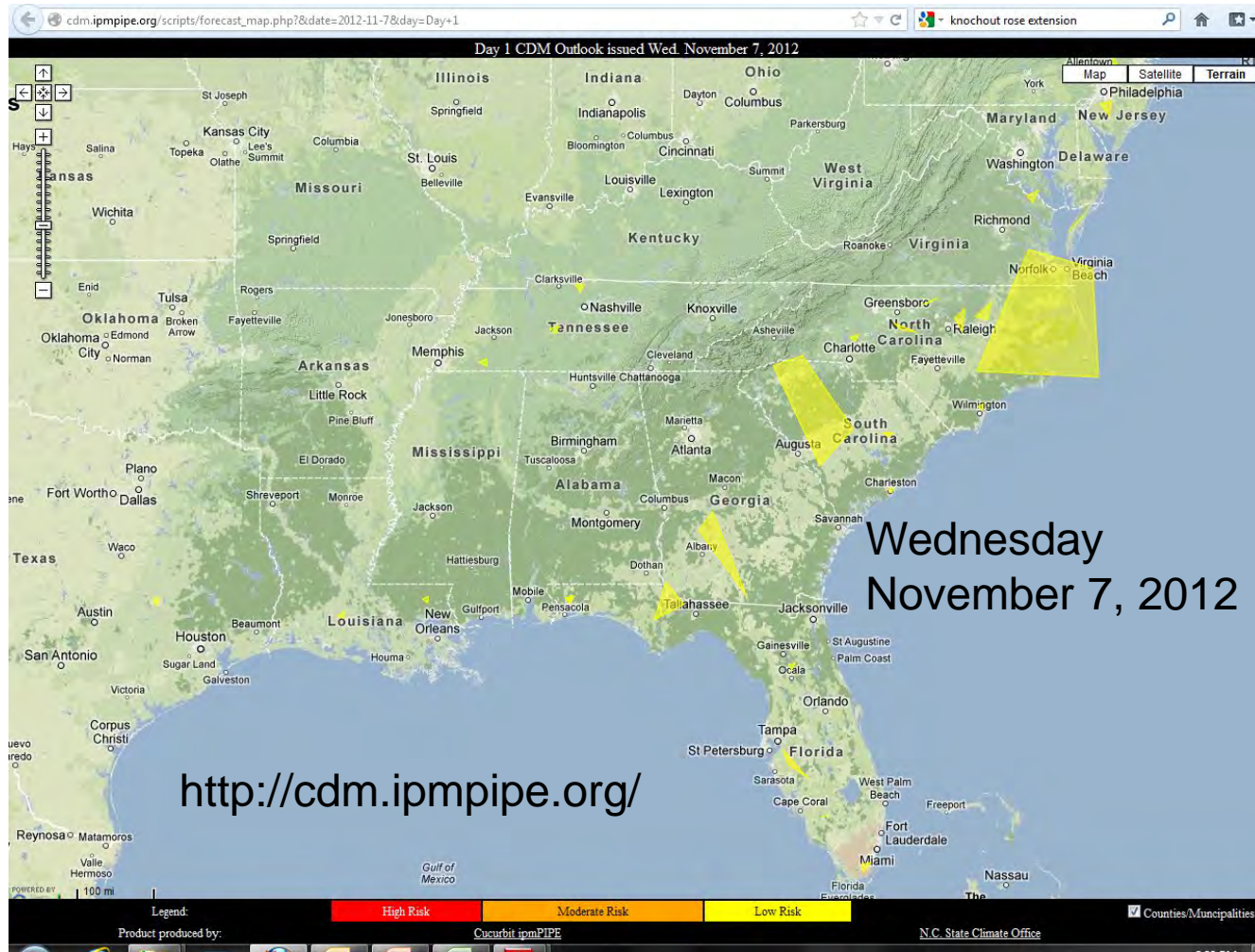


Virginia Cooperative Extension

Virginia Tech • Virginia State University

www.ext.vt.edu

Forecasting Downy Mildew



Virginia Cooperative Extension
Virginia Tech • Virginia State University

www.ext.vt.edu

Powdery Mildew

- **Symptoms:** white powder on leaves, stunting, curling/drying of leaves, malformed buds



Virginia Cooperative Extension

Virginia Tech • Virginia State University

www.ext.vt.edu

Cucumber Beetle

- Attacks cucurbits, beans, corn, peanuts, potatoes, etc...
- **Damage:** seedling destruction, flower/foilage damage, root feeding, & disease transmission



Virginia Cooperative Extension

Virginia Tech • Virginia State University

www.ext.vt.edu

Squash Bugs

- Pest of cucurbits, esp. squash & pumpkins
- 2-3 generations/year
- Damage: vine wilt & death, disease transmission



Virginia Cooperative Extension

Virginia Tech • Virginia State University

www.ext.vt.edu

Colorado Potato Beetle

- Major pest of nightshade family
- Overwinters in soil as adult
- Severe defoliation
- Control: crop rotation, insecticides



Virginia Cooperative Extension

Virginia Tech • Virginia State University

www.ext.vt.edu

Flea Beetles



Virginia Cooperative Extension

Virginia Tech • Virginia State University

www.ext.vt.edu

Blossom End Rot



Virginia Cooperative Extension

Virginia Tech • Virginia State University

www.ext.vt.edu

Sunscauld



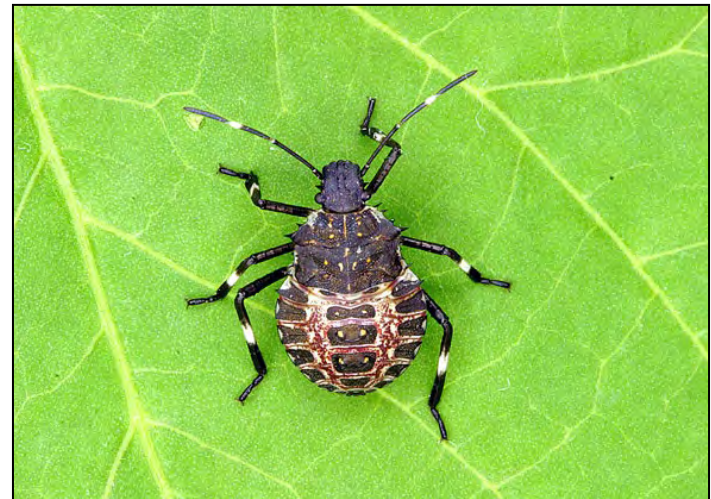
Virginia Cooperative Extension

Virginia Tech • Virginia State University

www.ext.vt.edu

Brown Marmorated Stink Bug

- Native to Asia
- Found in VA in 2004
- Pest of tree fruits, vegetables & field crops



Stink Bug Damage



Virginia Cooperative Extension

Virginia Tech • Virginia State University

www.ext.vt.edu

Rust

- Fungal
- Some require alternate host



Virginia Cooperative Extension

Virginia Tech • Virginia State University

www.ext.vt.edu

Hollyhock Rust



Virginia Cooperative Extension

Virginia Tech • Virginia State University

www.ext.vt.edu

Fire Blight

- Bacterial: *Erwinia amylovora*
- Rose family
- **Symptoms:** flame-scorched, shepherd's hook



Virginia Cooperative Extension

Virginia Tech • Virginia State University

www.ext.vt.edu

Codling Moth



Virginia Cooperative Extension

Virginia Tech • Virginia State University

www.ext.vt.edu

Brown Rot



Virginia Cooperative Extension
Virginia Tech • Virginia State University

www.ext.vt.edu

Black Knot



Virginia Cooperative Extension

Virginia Tech • Virginia State University

www.ext.vt.edu

Peach Tree Borer



Virginia Cooperative Extension
Virginia Tech • Virginia State University

www.ext.vt.edu

Mechanical



Virginia Cooperative Extension
Virginia Tech • Virginia State University

www.ext.vt.edu

Root Damage



Virginia Cooperative Extension
Virginia Tech • Virginia State University

www.ext.vt.edu

Root Damage



Virginia Cooperative Extension
Virginia Tech • Virginia State University

www.ext.vt.edu

Sooty Mold



Virginia Cooperative Extension

Virginia Tech • Virginia State University

www.ext.vt.edu

Crown Gall

- Bacterial (*Agrobacterium tumefaciens*)
- Easily transmitted between plants
- **Symptoms:** abnormal growth



Virginia Cooperative Extension

Virginia Tech • Virginia State University

www.ext.vt.edu

Other Galls



Virginia Cooperative Extension
Virginia Tech • Virginia State University

www.ext.vt.edu

Lichens

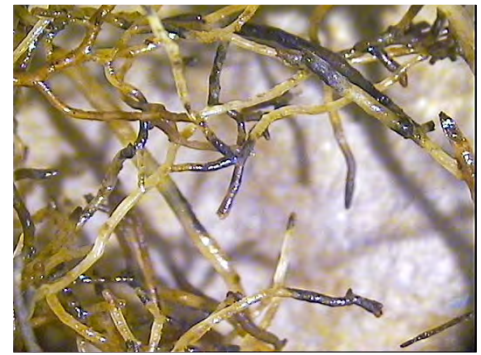


Virginia Cooperative Extension
Virginia Tech • Virginia State University

www.ext.vt.edu

Root Rots

- Many causal organisms (*Pythium*, *Phytophthora*,...)
- **Symptoms:** limp, soggy or dark-colored roots



Virginia Cooperative Extension

Virginia Tech • Virginia State University

www.ext.vt.edu

Leafminer



Virginia Cooperative Extension

Virginia Tech • Virginia State University

www.ext.vt.edu

Juniper Twig Blight

- **Symptoms:** browning/dieback of young leaves and twigs
- Cool, moist conditions



Virginia Cooperative Extension

Virginia Tech • Virginia State University

www.ext.vt.edu

Entomosporium leaf spot



Virginia Cooperative Extension

Virginia Tech • Virginia State University

www.ext.vt.edu

Azalea Lace Bug



Virginia Cooperative Extension

Virginia Tech • Virginia State University

www.ext.vt.edu

Black Spot on Rose



Virginia Cooperative Extension
Virginia Tech • Virginia State University

www.ext.vt.edu

Rose Rosette



Virginia Cooperative Extension
Virginia Tech • Virginia State University

www.ext.vt.edu

Questions?



Virginia Cooperative Extension
Virginia Tech • Virginia State University

www.ext.vt.edu