

Brenda Burke - Hanover Master Gardener

- Obtained a B.S. in Biology from Virginia Tech
- Worked 30 years at Altria as a Senior Research Scientist
- Served as a Botany, Zoology and Microbiology judge for the Metro Richmond Scientist Fair for 10 years
- Studied Landscape Design at the University of Richmond and Lewis Ginter Botanical Garden
- Became a Hanover Master Gardener in 2012
- Featured Old Church Garden on Virginia Home Grown in March 2018
- Raised Honey Bees for 5 years
- Maintained a membership with the East Richmond Bee Club
- Served as a presenter at the Science Museum of Virginia for the observation Honey Bee hive

The Basics of Landscaping

- ✓ Right Plant
- ✓ Right Place

Conifers in your Landscape



Brenda Burke – Hanover Master Gardener



LANDSCAPING

Landscaping refers to the beautification of outdoor terrain through:

1. **Plants** - Planting flowers, shrubs, groundcover, grasses & trees.
2. **Hardscape** - Constructing walkways, walls, water fountains and drainage.

While some people consider landscaping as an expensive process, it is important to note that there are many benefits

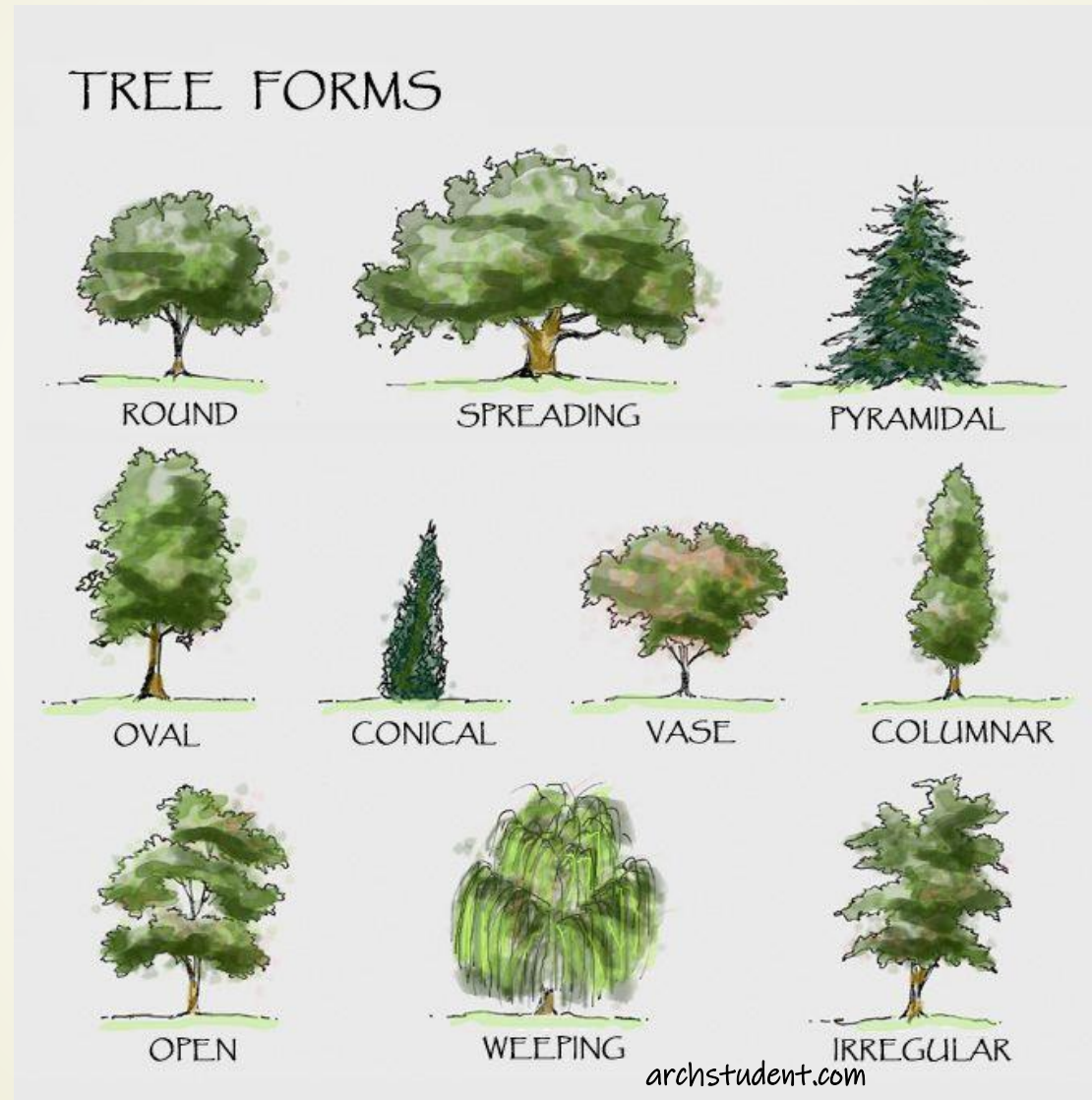
Benefits of Landscaping

- ✓ Improves soil quality
- ✓ Serves as a food source & habitat for wildlife
- ✓ Reduces heating & cooling
- ✓ Adds value to your house
- ✓ Source of exercise – 1 hour of weeding is 300 calories
- ✓ Filters rain water & reduces runoff
- ✓ Improves air quality
- ✓ Serves as a healthy food sources for your family
- ✓ Reduces crime in cities
- ✓ Makes you feel good, design what you like

Plant Terminology for Landscaping

- ❖ Annual – plant that lives, reproduces and dies in one growing season.
- ❖ Perennial – loses leaves in the fall, but comes back every year.
- ❖ Evergreen – leaves are retained throughout the year.
- ❖ Conifer – usually have needle-shaped evergreen leaves and have cones.
- ❖ Deciduous – leaves are shed prior to winter.
- ❖ Native Plant – those that occur in the region in which they evolved. Many are resistant to droughts, insects and diseases.
- ❖ Cultivar – “man selected” can be sports or mutations on a plant or can be hybrids of two or more plants. They are selected for their uniqueness, color and predictability.

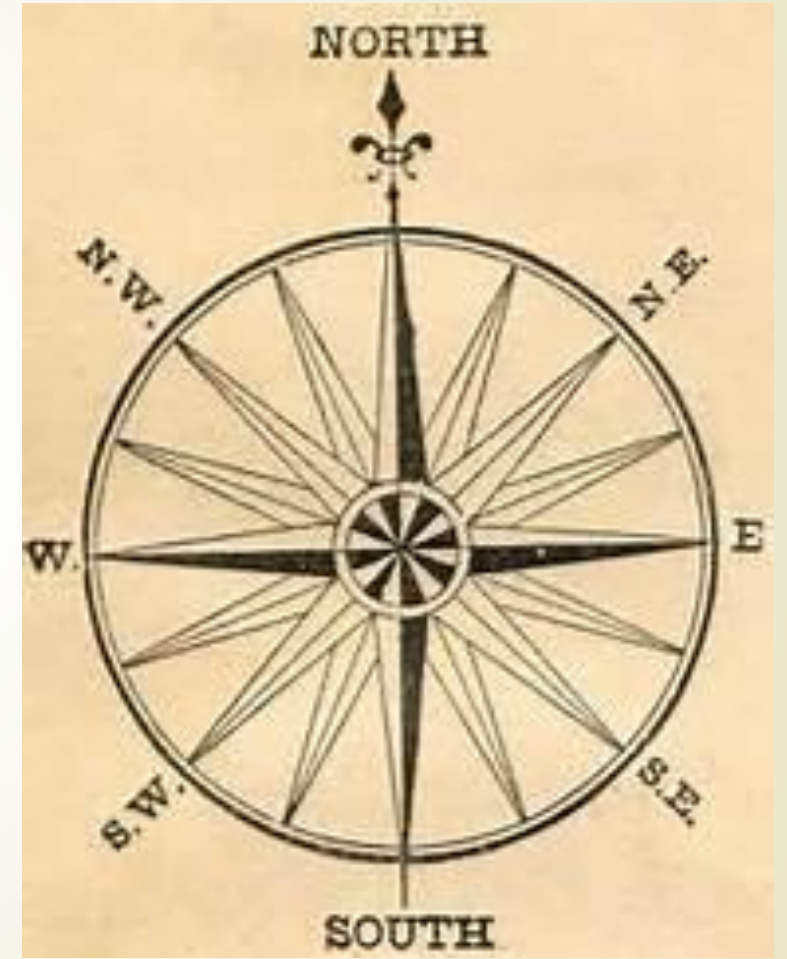
Plant Shapes / Forms in Landscaping



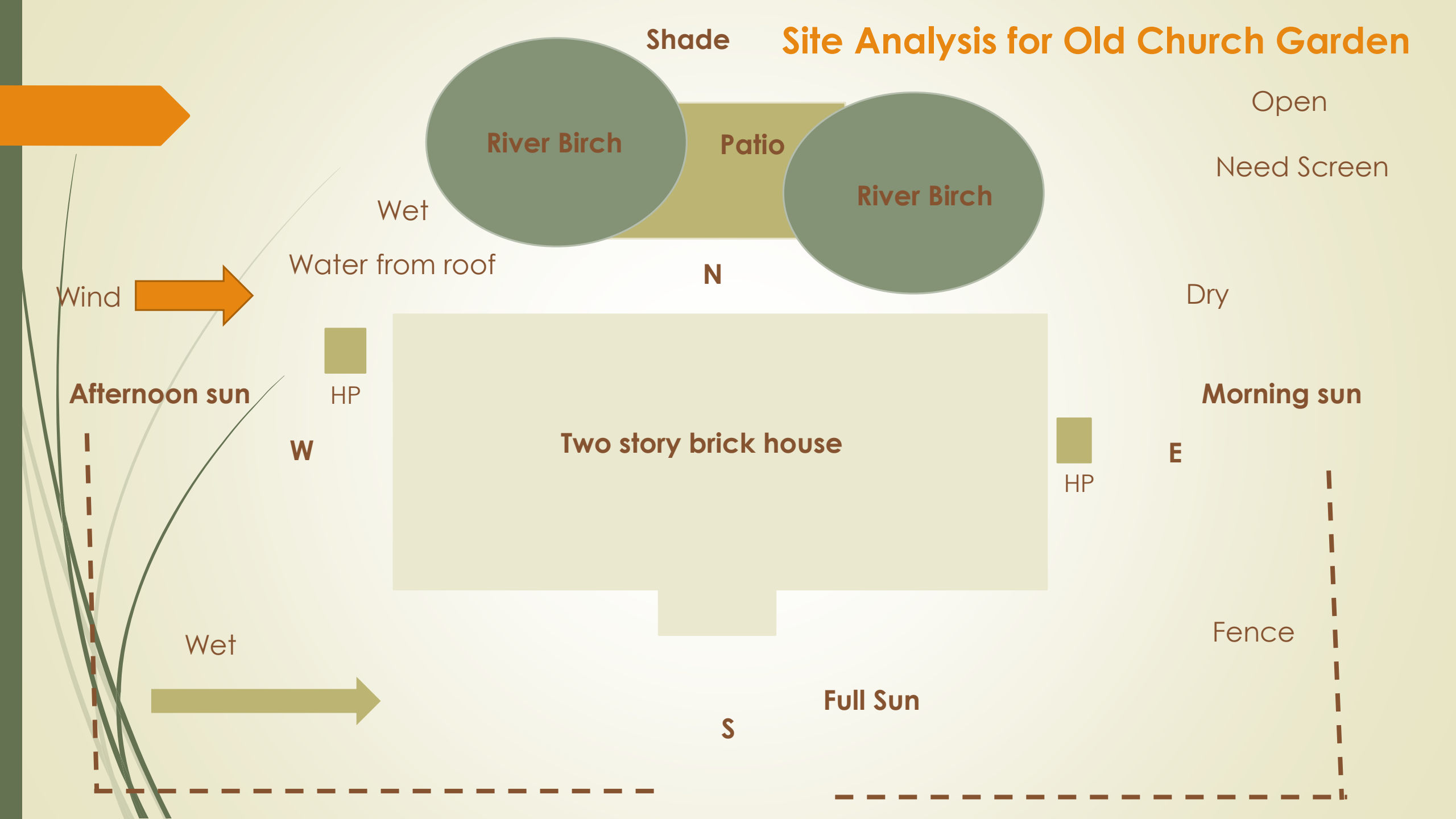
Site Analysis

Evaluate your site

- ✓ Direction N, S, E, W
- ✓ Sun, shade, part-shade
- ✓ Existing Structures and condition
- ✓ Moisture levels
- ✓ Existing plants and condition
- ✓ Screening needs



Site Analysis for Old Church Garden



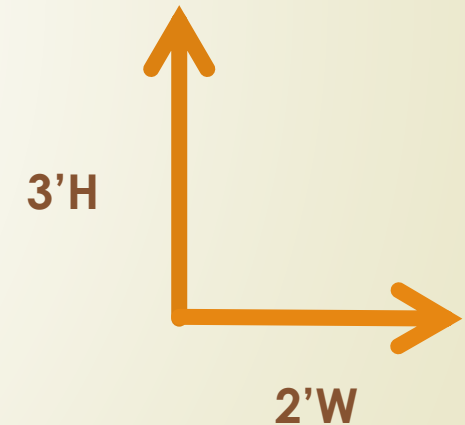
Importance of plant tags for selecting the Right Plant

- ✓ Right Plant
- ✓ Right Place



Zone 7 (Range)

Sun / shade



Landscaping Concepts and Principals

1. Repetition, Massing
2. Variety
3. Layering
4. Specimen Plant
5. Hardscape
6. Open Spaces



1. Repetition and Massing



Blue Pacific Juniper (6"T x 8'W)

Groundcover

1. Repetition and Massing



1. Repetition and Massing

Eastern White Pine



Blue Pfitzer Juniper (screening)

1. Repetition and Massing



**5 Nellie Steven's
Holly – too large for
space**

**Wrong plant
Wrong place**

1. Repetition and Massing



**4 North Pole
Arborvitae**

**Replaced 5
Nelly Stevens
Holly**



**7 Grey Owl
Juniper
4'T x 8'W**

**Replace
Fence**

1. Repetition and Massing

Osmanthus goshiki

Dwarf Japanese Garden Juniper



Lavender Phlox

2. Variety – height, leaf shape, color, evergreen, deciduous, flowering, bark interest

Bloodgood London Plaintree



Sycamore X

Hinoki False Cypress



All Gold Juniper (6" T x 6' W)

Norway Spruce



Swift Creek Privet (12' T x 8' W)

2. Variety – height, leaf shape, color, evergreen, deciduous, flowering, bark interest



River Birch

Otto Luyken
Laurel

Azalea

2. Varsity – height, leaf shape, color, evergreen, deciduous, flowering, bark interest



**Royal Star
Magnolia**

Odd numbers

3, 5, 7, 9

3. Specimen – Focal point, accent, usually single plant



Dragon Eye Pine (Japanese Red Pine) 20'T x 15'W



Golden Joy Juniper (1'T x 4'W)

3. Specimen – Focal point, accent, usually single plant

Bronze
in winter

Old Church
Garden



45'T

Replacement
for Leyland
Cypress



Cryptomeria japonica 'Radicans' – Japanese Cedar

20'W

Used for Screening also



Replacement for
Leyland Cypress

Cryptomeria japonica
'Radicans'
Japanese Cedar
45'T x 20'W

3. Specimen – Focal point, accent, usually single plant



Sugar Maple – Fall color

3. Specimen – Focal point, accent, usually single plant

Claudia Wannamaker Magnolia



70'T

50'W

Blue Atlas Cedar



60'T

40'W

3. Specimen – Focal point, accent, usually single plant

Claudia Wannamaker Magnolia

70'T



50'W

Willisorchards.com

Blue Atlas Cedar

60'T



40'W

Willisorchards.com

3. Specimen – Focal point, accent, usually single plant



Weeping Katsura Tree



Japanese Maple

4. Layering – height, color, leaf shape



Dwarf Hinoki Cypress & Goshiki False Holly

4. Layering – height, color, leaf shape



**Upright
Magnolia**

River Birch

**Sea Green
Juniper**

Western Exposure – Wind Screen

4. Layering – height, color, leaf shape



Foster Holly

Osmanthus goshiki

Dwarf Hinoki False Cypress

Ajuga



North Pole
Arborvitae

15'T

5'W

Meadow Landscaping

Using the Design Concepts and Principals



1. Repetition, Massing
2. Variety
3. Layering
4. Specimen Plant
5. Hardscape
6. Open Spaces

5. Hardscape – buildings, structures, pots, water features



Concrete Globes



Gazing Ball



English Bee Hive

5. Hardscape – buildings, structures, pots, water features



Heat Pump Screen



Brick
Column

5. Hardscape – buildings, structures, pots, water features



Gargoyle



Foo Dog

5. Hardscape – buildings, structures, pots, water features



Raised Bed Garden



Yard Swing

5. Hardscape – buildings, structures, pots, water features



**Outdoor Kitchen
with Fireplace
and grill**

River Birch Trees

Otto Luyken Laurel

Quarts Stone

5. Hardscape – buildings, structures, pots, water features



Willow Oak

Grouping of
ceramic pots

Japanese Forest
Grass

Otto Luyken
Laurel

Elephant Ear
'Elena'

Angelina Sedum

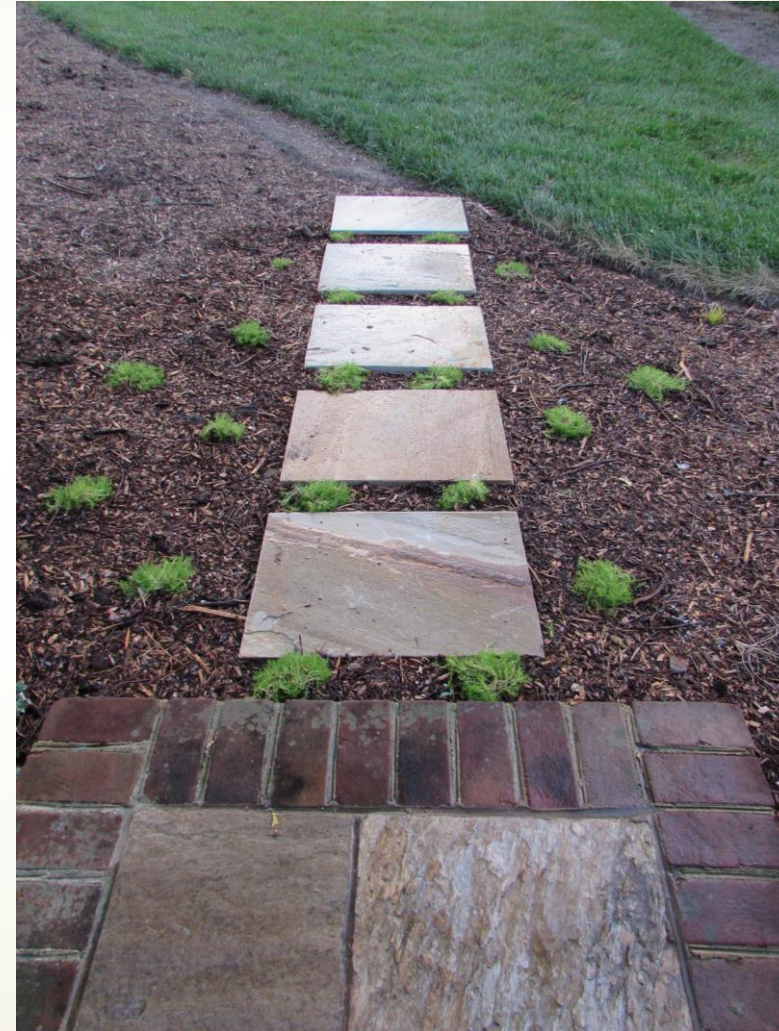
5. Hardscape – buildings, structures, pots, water features

CONTAINER GARDENING

Red Coleus

Lime & Purple
Potato Vines

Emerald
Gaiety
Euonymus



Stone Pavers

Scottish Moss

5. Hardscape – buildings, structures, pots, water features



CONTAINER GARDENING

- Coleus
- Lime & Purple Potato Vine
- Purple Spiderwort
- Moonshadow Euonymus

5. Hardscape – buildings, structures, pots, water features



CONTAINER GARDENING

- Gold Coleus
- Lime & Purple Potato Vine
- Purple Spiderwort
- Annual Vinca

5. Hardscape – buildings, structures, pots, water features



CONTAINER GARDENING



Gold Coleus

Lime & Purple
Potato Vine

Annual Vinca

6. Open Spaces

October Glory
Maples (4)



Lawn

- Cut at 4" weekly
- No chemicals
- Keep clippings
- Has clover
- No watering

6. Open Spaces

View of driveway



6. Open Spaces

View of driveway in Winter 2019

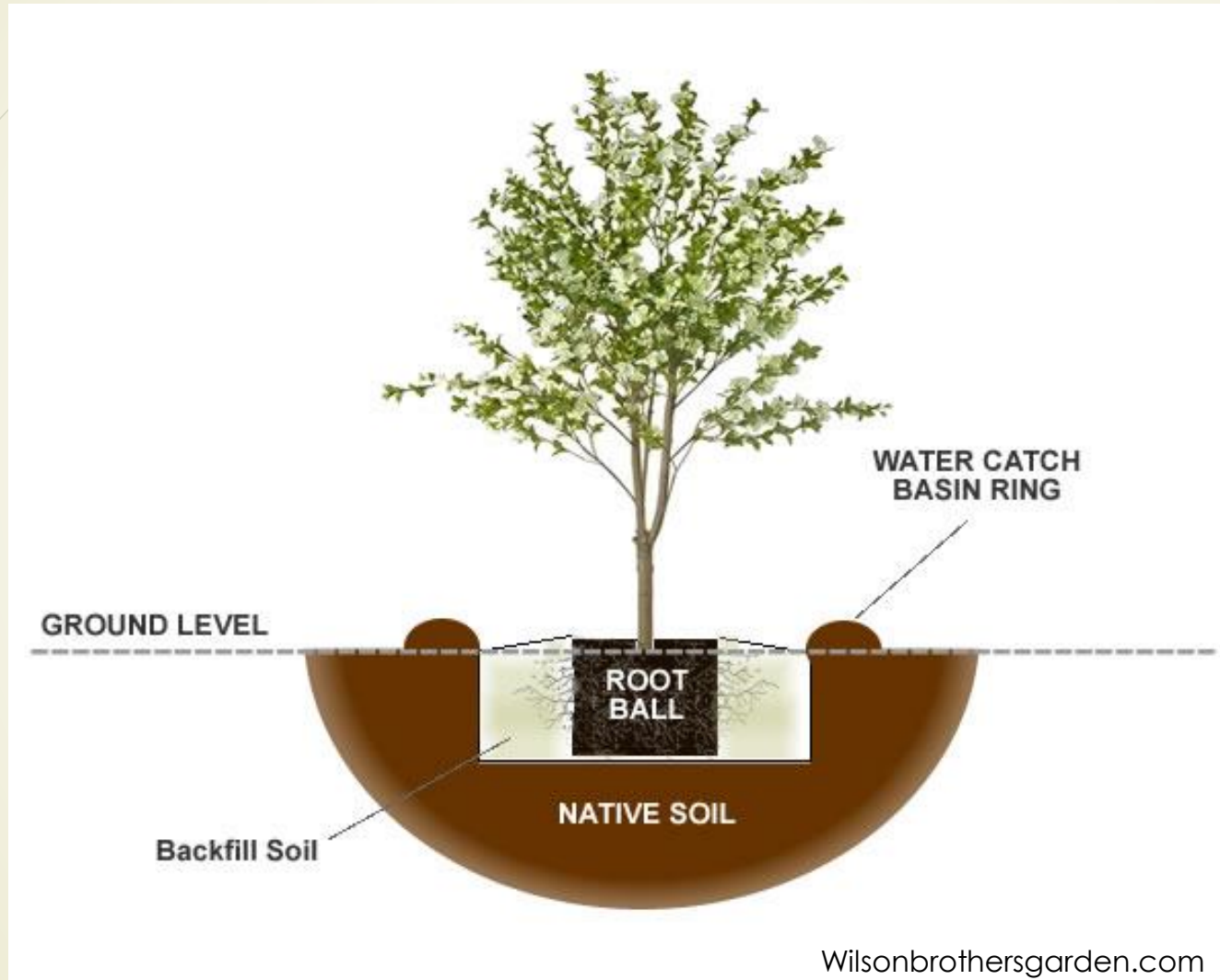


✓ Where to find the Right Plant

- ❑ Spring Hanover Master Gardener plant sale
- ❑ Box Stores
- ❑ Local Nurseries
- ❑ Mail Order
- ❑ Friends
- ❑ Propagation



Planting



- Call 811 before you dig
- Loosen root ball
- Plant slightly high
- Don't put mulch around crown

Weed Control



Cover beds with cardboard, burlap and newspaper prior to mulching

Composting



**Compost leaves and
wood chips for mulch**

**Maintain a food scrap,
grass & leaves compost
pile**



Replacing Plants as needed



Blue Cascade Distylium



- American Boxwood
- English Boxwood (x2)
- David Viburnum
- Frost Proof Gardenia
- Blue Cascade Distylium
- **Green Meatball Privet**

Landscape Maintenance

- Add compose to beds once a year
- Trim damaged branches
- Take out dead or dying plants
- Replace plants as needed in Fall



Plants of Interest – Hoogendorn Holly



- Zone 4 – 8
- Full Sun
- Dark Green
- Globe (Boxwood)

3'T

3'W

Plants of Interest – Helleri Holly



4'T

4'W

- Zone 4 – 9
- Full Sun / part
- Rich Green
- Mounding habit

Plants of Interest – Liberty Holly



8'T

6'W

- Zone 6 – 9
- Full Sun
- Dark green, red berries
- Pyramidal

Plants of Interest – Pearlfic Viburnum



- Zone 6 – 9
- Full Sun / part
- Dark green, white flowers
- Loose mounding shrub

6'T

6'W

Plants of Interest – Claudia Wannamaker Magnolia

70'T



50'W

- Zone 6A – 9
- Full Sun / part
- Dark green, white flowers
- Pyramidal



Plants of Interest – Swift Creek Privet

10'T



8'W

- Zone 6 – 9
- Full Sun / part
- Variegated – light blue-green, cream edges
- Loosed rounded shrub

Plants of Interest – Sunshine Dwarf Privet



4'T

- Zone 6 – 10
- Full Sun / part
- Yellow, lime green
- Loose mound

4'W

Plants of Interest – Harlequin Euonymus



2'T

3'W

- Zone 5 – 8
- Full Sun / part
- Green & white variegated
- Arching mound, groundcover

Plants of Interest – Emerald Gaiety Euonymus



3'T

3'W

- Zone 5– 9
- Full Sun / part
- Emerald green, cream edges
- Erect mound, dense, can climb

Plants of Interest – Japanese Spurge



- Zone 4 – 8
- Shade, part shade
- Bright green
- Groundcover

Spreading

Plants of Interest – Illumination Vinca Vine



6'T

6'W

- Zone 5 – 8
- Sun / part
- Golden yellow edged with deep green
- Vine, groundcover

Plants of Interest – Goshiki False Holly



Osmanthus

- Zone 6 – 9
- Sun / part
- Cream, gray-green, yellow
- Dense mound

5'T

5'W

Plants of Interest – Goshiki (five colors) False Holly



Plants of Interest

Japanese Forest Grass

- Zone 5 – 9
- Part shade, shade
- Yellow, cream, green
- Arching



Plants of Interest – Royal Purple Smoke Tree



15'T

12'W

- Zone 4 – 8
- Full Sun
- Plum-purple leaves, pinkish-purple mist
- Loose rounded bush

4 Across front yard

Plants of Interest – Osmanthus heterophyllus

“Holly tea olive”



10'T

9'W

- Zone 7 – 9
- Full Sun / part
- Dark green, white flowers
- Large mound

**Very fragrant flowers
November-December**

Plants of Interest – Osmanthus Heterophyllus



Two Leaf Shapes

Plants of Interest – River Birch, Winter

70'T



50'W

- Zone 4 – 9
- Full Sun / part
- Green, peeling bark
- Oval upright

Plants of Interest – Kousa Dogwood



30'T

Disease resistant



30'W

- Zone 5 – 8
- Full Sun / part
- Green, white flowers
- Rounded form

Plants of Interest – Nandina cultivars



'Lemon Lime'



'Flirt'



- **Zone 6 – 9**
- **Full Sun / part**
- **Gold, Purple**
- **Dwarf (3'H x 3'W)**

Conifers in the Landscape



- ❑ Standard

- ❑ Dwarf

- ❑ Grafts

Conifers – Japanese Garden Juniper ‘Nana’



12''T

6'W

- Zone 4 – 8
- Full Sun
- Blue green
- Mounding/trailing groundcover

Conifers – Blue Pacific Shore Juniper



- Zone 5 – 9
- Full Sun
- Blue-green
- Low spreading groundcover

10''T

7'W

Conifers – Dwarf Globe Blue Spruce



3'T

3'W

- Zone 3 – 8
- Full Sun
- Blue
- Grafted, mound on a trunk



Conifers – Grey Owl Juniper



- Zone 4 – 9
- Full Sun
- Blue-grey
- Arching

3'T

6'W

Conifers – Grey Owl Juniper



- Zone 4 – 9
- Full Sun
- Blue-grey
- Arching

Conifers – Blue Pfitzer Juniper



5'T

8'W

- Zone 4 – 9
- Full Sun
- Blue-green
- Arching

Conifers – Cryptomeria Globosa Nana



6'T

6'W

- Zone 5 – 9
- Full Sun / part
- Green
- Dome shape

Conifers – Blue Atlas Cedar

60'T



40'W

- Zone 6 – 9
- Full Sun
- Silvery-blue
- Pyramidal when young

Conifers – Meyers Spruce



- Zone 3 – 8
- Full Sun
- Blue-green
- Conical shape

40'T

20'W

Conifers – Moonglow Juniper



15'T

6'W

- Zone 3 – 7
- Full Sun
- Silvery-blue
- Narrow, Columnar

Conifers – Feeln' Blue Deodar



- Zone 6 – 9
- Full Sun
- Blue-green
- Irregular spreading

5'T

8'W

Conifers – Feeln' Sunny Deodar



- Zone 7 – 9
- Full Sun, part
- Yellow, light green
- Irregular spreading

12'T

8'W

Conifers – Saybrook Gold Juniper

5'T



6'W



- Zone 4 – 9
- Full Sun
- Gold, green
- Arching

Conifers – All Gold Juniper

10" T



6' W

- Zone 6 – 9
- Full Sun / part
- Gold, yellow, green
- Groundcover

Conifers – Emerald Green Arborvitae

18'T



7'W

- Zone 3 – 8
- Full Sun
- Emerald green
- Columnar

Conifers – North Pole Arborvitae

15'T



5'W

- Zone 3 – 7
- Full Sun
- Green
- Columnar

Conifers – Alberta Spruce



8'T

4'W

- Zone 2 – 8
- Full Sun / part
- Medium green
- Dense, pyramidal

Conifers – Sea Green Juniper



- Zone 4 – 9
- Full Sun
- Dark green
- Arching, spreading

6'T

8'W

Conifers – Japanese Black Pine

- Zone 6 – 9
- Full Sun only
- Green
- Irregular form, wide branches



60'T

20'W



Conifers – Dwarf Hinoki Cypress



- Zone 4 – 8
- Full Sun / part
- Dark green
- Irregular, unique form

6'T

4'W

Conifers – Fernspray False Cypress



- Zone 4 – 8
- Full Sun
- Fern-like dark green
- Irregular, open

12'T

8'W

Conifers – Diseases, Pest & Issues

Conifers can be harmed or killed by:

Pathogens - the most common tree diseases are caused by **fungi**, though some are caused by **bacteria** or **viruses**

Insects - Bagworms, Spider mites, Aphids, Caterpillars, Bark Beetles, Armored Scales, Moths

Environmental – too wet, dry, cold, impacted, nutrient low, ice, snow

Conifers – Diseases, Pest & Issues



Bagworms

- Hand pick
- Spray with Bt in May & June
- One female bag contains 500 -1000 eggs in the spring

Conifers – Snow & Ice damage



Conifers – Snow & Ice damage



Conifers – Snow & Ice damage



Dwarf Globe Blue
Spruce

Invasive Plants = Wrong Plant

Non-native species that causes environmental or economic harm



Chinese Wisteria



English Ivy

Invasive Plants = Wrong Plant



Privets



Ailanthus – Tree of Heaven

Virginia Cooperative Extension Hanover County

Virginia Tech References for Garden & Landscape Design Information

- 426-070 (HORT-155P) Backyard Wildlife Habitats
- 426-087 The Effect of Landscape Plants on Perceived Value
- 426-721 (HORT-234) The Value of Landscaping
- 426-713 (HORT-200P) Creating a Water-Wise Landscaping
- 426-366 (HORT-161P) Minimum Chemical Gardens
- 426-202 (HORT-87P) Planning the Flower Border





✓ Right Plant

✓ Right Place

- ❖ Are you checking the plant tags?
- ❖ Is it beneficial to wildlife?
- ❖ Does the plant have enough space?
- ❖ Is it low maintenance?
- ❖ Is it invasive?
- ❖ Does it do well in Zone 7? **Zone 6-8**
- ❖ Do you have a location for herbs and vegetables?
- ❖ Do YOU like it?
- ❖ Questions?

Conifers in the Garden – Virginia Home Grown



Show video

Check out the gardening special on PBS highlighting

Evergreens for Late Winter Gardens

featuring

Master Gardener Brenda Burke at Old Church Farm

March 27th at 8 PM PBS Channel 23 (check local listings)