

May Integrated Pest Management



ROUND-HEADED BORER

TREAT BARK OF TRUNK AND BRANCHES IN EARLY MAY, EARLY JUNE, AND EARLY JULY.

THE ROUND-HEADED BORER IS THE LARVAE OF THE LONGHORNED BEETLE. IT'S THE LARVAE THAT BORE INTO THE TREE BARK AND DO THE DAMAGE.

ORGANIC: SPINOSAN

CHEMICAL: ACEPHATE, ACETAMIPRID, AVERMECTIN B1, CLOTHIANIDIN, ESFENVALERATE, IMIDACLOPRID (AS A SOIL DRENCH PRIOR TO INFESTATION), PERMETHRIN



PERIODICAL CICADA

TREAT BARK OF TWIGS ON SUSCEPTIBLE HOSTS SOON AFTER ADULT MALE SINGING BECOMES EVIDENT, USUALLY AROUND EARLY MAY.

ORGANIC: NETTING AROUND SMALL TREES MAY KEEP MOST CICADA OFF THE TREES.

CHEMICAL: BETA-CYFLUTHRIN, BIFENTHRIN, CARBARYL, CYFLUTHRIN, DELTAMETHRIN, ESFENVALERATE, GAMMACYHALOTHRIN, LAMBDA-CYHALOTHRIN, DELTAMETHRIN & GERANIOL & OIL OF THYME, LAMBDA-CYHALOTHRIN & CHLORANTRANILIPROLE, PIPERONYL BUTOXIDE & ZETA-CYPERMETHRIN



LILAC BORER/ASH BORER

EARLY MAY AND REPEAT 6 WEEKS LATER.

LILAC AND ASH

ORGANIC: PRUNE AND DESTROY INFESTED LIMBS

CHEMICAL: BIFENTHRIN, PERMETHRIN. TREATMENTS KILL EMERGING AS WELL AS ENTERING BORERS. THOROUGH WETTING AND SOAKING OF THE BARK IS NECESSARY. FOLIAGE NEED NOT BE TREATED.



DOGWOOD TWIG BORER

TREAT ONE-YEAR-OLD STEMS ON THE TREE IN MID-MAY AND IN MID JUNE.

ELM, DOGWOOD, VIBURNUM, MANY FRUIT TREES, AZALEA, BLUEBERRY AND LAUREL. LARVAE TUNNEL IN LIVE TWIGS AND FEED DOWN THE CENTER OF THE BRANCH.

ORGANIC: PARASITIC WASPS

CHEMICAL: BIFENTHRIN, IMIDACLOPRID

CUT OUT AND DESTROY WILTING STEMS.



AZALEA STEM BORER

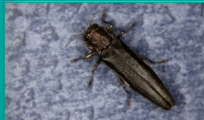
MID-MAY, MID-JUNE

AZALEAS, RHODODENDRONS, BLUEBERRIES, MOUNTAIN LAUREL

ORGANIC: PARASITIC WASPS

CHEMICAL: BIFENTHRIN, IMIDACLOPRID

CUT OUT AND DESTROY WILTING STEMS.



BRONZE BIRCH BORER

TREAT ALL BARK SURFACES, ESPECIALLY IN THE UPPERMOST PART OF THE TREE IN MID-MAY, AND EARLY, MID- AND LATE JUNE.

CHEMICAL: ACEPHATE, BIFENTHRIN, IMIDACLOPRID (AS A SOIL DRENCH PRIOR TO INFESTATION), PERMETHRIN, MIXTURES OF BIFENTHRIN & IMIDACLOPRID OR CLOTHIANIDIN, MIXTURES OF IMIDACLOPRID & BIFENTHRIN OR CYFLUTHRIN, IMIDACLOPRID, ENDOSULFAN, PERMETHRIN



CAMELLIA SCALE

TREAT MAY 10-20 AND/OR SEP 10-20.

CAMELLIA, HOLLY (PARTICULARLY BURFORD), PRIVET, CLEYERIA, TERNSTROEMIA, AND RHAPIOLEPSIS

ORGANIC: LACEWINGS, INSECTICIDAL SOAP

CHEMICAL: DIMETHOATE, IMIDACLOPRID



EUONYMUS SCALE

TREAT MAY 10-20 AND JULY 5-15.

EUONYMUS SPECIES, PARTICULARLY EVERGREEN SHRUB VARIETIES, SPINDLE TREE, PACHYANDRA, HOLLY, PRIVET AND SOME BOXWOOD.

ORGANIC: LIME SULFUR, PARAFFIN OIL, LACEWINGS, INSECTICIDAL SOAP

CHEMICAL: ACETAMIPRID, MALATHION, NYLAR



Soft Scale

Golden Oak Scale

Cottony Maple Scale

Azalea Bark Scale

GENERAL SCALE INSECTS

FOR HORTICULTURAL OIL, TREAT IN LATE MARCH OR EARLY APRIL BEFORE NEW GROWTH DEVELOPS, AND WHEN TEMPERATURES ARE NOT LIKELY TO GO BELOW 40°F (5°C) FOR 12-24 HOURS. FOR OTHER INSECTICIDES ON LIST TREAT AT CRAWLER DATE. OILS CAN ALSO BE USED AS SUMMER SPRAYS WHEN INDICATED ON THE LABEL. IMIDACLOPRID MAY NOT CONTROL ALL TYPES OF SCALES.

ORGANIC: LACEWINGS, DORMANT OIL, AZADIRACTIN, BORAX DECAHYDRATE, CANOLA OIL, CAPSAICIN, LIME SULFUR, MINERAL OIL, NEEM OIL, PARAFFIN OIL, POTASSIUM LAURATE, PYRETHRINS, SOYBEAN OIL

CHEMICAL: ACEPHATE, ACETAMIPRID, AVERMECTIN B1, BUPROFEZIN, CARBARYL, CLOTHIANIDIN, DIMETHOATE, ESFENVALERATE, IMIDACLOPRID, MALATHION, NYLAR, PERMETHRIN, SPIROTETRAMAT



TWOLINED CHESTNUT BORER

TREAT TRUNK AND BRANCHES MID- TO LATE MAY AND MID- TO LATE JUNE.

THE FIRST SYMPTOM OF BORER ATTACK IS USUALLY WILTED FOLIAGE ON SCATTERED BRANCHES DURING LATE SUMMER.

OAKS AND CHESTNUTS ARE THE PRIMARY HOSTS.

CHEMICAL: IMIDACLOPRID AS A SOIL DRENCH PRIOR TO INFESTATION. ENDOSULFAN, PERMETHRIN



LACEBUG

TREAT IN LATE MAY OR EARLY JUNE AND AT 3-WEEK INTERVALS. TREATMENTS MUST COVER UNDERSIDES OF LEAVES. AZALEA, RHODODENDRON, ROSACEOUS PLANTS, QUINCE, PYRACANTHA, LANTANA, MOUNTAIN LAUREL

ORGANIC: AZADIRACTIN, CANOLA OIL, CAPSAICIN, PARAFFIN OIL, POTASSIUM LAURATE, SOYBEAN OIL, POTASSIUM LAURATE & SULFUR

CHEMICAL: ACEPHATE, AVERMECTIN B1, CARBARYL, CHLORANTRANILIPROLE, CLOTHIANIDIN, DELTAMETHRIN, DIMETHOATE, ESFENVALERATE, IMIDACLOPRID, LAMBDA-CYHALOTHRIN, MALATHION, PERMETHRIN, THIAMETHOXAM



DOGWOOD BORER

THE LARVAE USUALLY EMERGE IN LATE MAY AND JUNE, BUT MAY CONTINUE THROUGHOUT THE SUMMER. TREAT TRUNK AND LARGER BRANCHES IN MID-MAY AND REPEAT AFTER 6 WEEKS.

DOGWOOD, PECAN, ELM, HICKORY, AND WILLOW

ORGANIC: AZADIRACTIN

CHEMICAL: ACETAMIPRID, BIFENTHRIN



FLAT-HEADED TREE BORER

MAY, VERY EARLY JUNE, EARLY JULY

APPLE AND OTHER FRUIT TREES, SHRUBS OF THE ROSE FAMILY. FLAT-HEADED BORERS ARE LARVAE OF METALLIC WOOD-BORING BEETLES

ORGANIC: SPINOSAN

CHEMICAL: ACEPHATE, ACETAMIPRID, AVERMECTIN B1, CLOTHIANIDIN, ESFENVALERATE, IMIDACLOPRID (AS A SOIL DRENCH PRIOR TO INFESTATION), PERMETHRIN



FLEA BEETLES

WHEN INSECTS ARE FOUND FEEDING ON HOST PLANTS AS ADULTS OR AS LARVAE.

BEETS, CABBAGE, EGGPLANT, LEAF CROPS, SWEET CORN, TOMATOES, SOMETIMES ON FLOWERS & SHRUBS. HARD TO SEE, THEY JUMP LIKE A FLEA WHEN APPROACHED.

ORGANIC: ROTENONE, SPINOSAN

CHEMICAL: CARBARYL, PERMETHRIN, ESFENVALERATE, BIFENTHRIN