

June Integrated Pest Management



BAGWORMS

APPLY TREATMENTS WHEN BAGS ARE LESS THAN 1/2 INCH, EARLY TO MID-JUNE. CONTROLS ARE LESS EFFECTIVE IN MID- TO LATE SUMMER.

JUNIPER, CEDAR, FALSE CYPRESS, LEYLAND CYPRESS, ARBORVITAE, WIDE VARIETY OF WOODY PLANTS INCLUDING BLACK LOCUST, ELM, CABBAGE PALMETTO, HONEY LOCUST, BUCKEYE, SYCAMORE, AND WILLOW

ORGANIC: AZADIRACTIN, BACILLUS THURINGIENSIS (BT), NEEM OIL, PYRETHRINS, DELTAMETHRIN & BIOALLETHRIN

CHEMICAL: ACEPHATE, BETA-CYFLUTHRIN, BIFENTHRIN, CARBARYL, CHLORANTRANILIPROLE, CYFLUTHRIN, DELTAMETHRIN, DIMETHOATE, DIMILIN, ESFENVALERATE, FLUVALINATE, GAMMACYHALOTHRIN, INDOXACARB, LAMBDA CYHALOTHRIN, MALATHION, METHOXYFENOZIDE, PERMETHRIN, SPINOSYN A, TEPUFENOZIDE



ROUND-HEADED BORER

REMINDER

TREAT BARK OF TRUNK AND BRANCHES IN EARLY JUNE, AND EARLY JULY.

ORGANIC: SPINOSAN

CHEMICAL: ACEPHATE, ACETAMIPRID, AVERMECTIN B1, CLOTHIANIDIN, ESFENVALERATE, IMIDACLOPRID (AS A SOIL DRENCH PRIOR TO INFESTATION), PERMETHRIN



TWOLINED SPITTLBUG

TREAT IN EARLY JUNE

HOLLIES, WILLOW, WILD GRASSES, ASTER, BLACKBERRY, PEA, AND MORNING GLORY.

ORGANIC: AZADIRACTIN, TALL OIL SOAPS

CHEMICAL: ACEPHATE, ACETAMIPRID, BETA-CYFLUTHRIN, BIFENTHRIN, CARBARYL, CHLORANTRANILIPROLE, CLOTHIANIDIN, CYFLUTHRIN, DELTAMETHRIN, DIBROMFOS, ESFENVALERATE, FERMONE BOVERIN, GAMMACYHALOTHRIN, IMIDACLOPRID, LAMBDA CYHALOTHRIN, MALATHION, PERMETHRIN, SPIROTETRAMAT, THIAMETHOXAM



STINK BUGS

EARLY JUNE - ADULTS EMERGE FROM OVER WINTERING. THE EGGS HATCH INTO SMALL BLACK AND RED NYMPHS THAT GO THROUGH FIVE MOLTS DURING JULY AND AUGUST. ADULTS BEGIN TO APPEAR IN MID AUGUST. SAP IS SUCKED FROM LEAVES, TWIGGS, BUDS, GROWING SHOOTS, FLOWERS, AND FRUITS. THE LIST OF FOOD PLANTS INCLUDES MORE THAN 80 SPECIES FROM MORE THAN 30 FAMILIES; THE SPECIES IS A GENERALIST.

ORGANIC: AZADIRACTIN, BEAUVERIA BASSIANA, CANOLA OIL, PARAFFIN OIL, POTASSIUM LAURATE, PYRETHRINS, SOYBEAN OIL

CHEMICAL: ACEPHATE, ACETAMIPRID, BETA-CYFLUTHRIN, BIFENTHRIN, CARBARYL, CLOTHIANIDIN, CYFLUTHRIN, CYPERMETHRIN, DELTAMETHRIN, DIMETHOATE, ESFENVALERATE, FENPROANATE, FLONICAMID, IMIDACLOPRID, LAMBDA CYHALOTHRIN, LANNATE, NOVALURON, PERMETHRIN, SORBITOL OCTANOATE, SPIROTETRAMAT, THIACTOPRID, THIAMETHOXAM, ZETA CYPERMETHRIN



WHITEFLIES

TREAT WHEN WHITEFLIES ARE FOUND, THEN EVERY 3 WEEKS UNTIL INFESTATION IS CONTROLLED.

THIS INSECT IS ALMOST TOTALLY RESISTANT TO ANY OF THE INSECTICIDES COMMONLY USED IN THE HOME GARDEN.

SUPPRESSING WHITEFLY POPULATIONS BEFORE THEY REACH LARGE NUMBERS IS ESSENTIAL TO PREVENT PLANT DAMAGE. ONCE HIGH-DENSITY POPULATIONS BECOME ESTABLISHED THEY ARE DIFFICULT TO SUPPRESS. IN A NUTSHELL, THIS INSECT IS EXTREMELY HARD TO KILL, THERE IS NOTHING LEGAL TO RECOMMEND FOR ITS CONTROL IN THE HOME GARDEN THAT WILL KILL ALL STAGES.

ORGANIC: HORTICULTURAL OIL AND INSECTICIDAL SOAPS MAY PROVIDE CONTROL OF LOW-DENSITY POPULATIONS IN THE LANDSCAPE. INSECT GROWTH REGULATORS (IGR) CAN BE USED FOR SUPPRESSION OF POPULATIONS, BUT THEY WILL NOT KILL ADULTS.

CHEMICAL: IMIDACLOPRID, ACEPHATE, DIAZINON, PYRETHROIDS
THOROUGH COVERAGE IS A MUST, ESPECIALLY ON UNDERSIDES OF LEAVES.



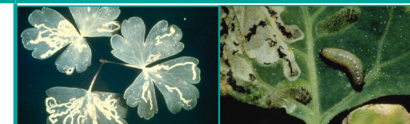
LACEBUGS

REMINDER

EARLY JUNE AND REPEAT AT 3-WEEK INTERVALS. TREATMENTS MUST COVER UNDERSIDES OF LEAVES.

ORGANIC: AZADIRACTIN, CANOLA OIL, CAPSAICIN, PARAFFIN OIL, POTASSIUM LAURATE, SOYBEAN OIL, POTASSIUM LAURATE & SULFUR

CHEMICAL: ACEPHATE, AVERMECTIN B1, CARBARYL, CHLORANTRANILIPROLE, CLOTHIANIDIN, DELTAMETHRIN, DIMETHOATE, ESFENVALERATE, IMIDACLOPRID, LAMBDA CYHALOTHRIN, MALATHION, PERMETHRIN, THIAMETHOXAM



LEAFMINER

TREAT IN MID- TO LATE JUNE AFTER EGGS HAVE HATCHED.

COLUMBINE, AZALEA, ARBORVITAE, BOXWOOD DELPHINIUM, DEUTZIA, DOGWOOD, ELMS, HAWTHORN, HOLLY, OAK, POPLAR, PRIVET. LEAFMINERS ARE THE LARVAE OF VARIOUS BEETLES, FLIES, MOTHS AND SAWFLIES.

ORGANIC: SPINOSAD, REMOVE AFFECTED LEAVES AND DESTROY.

CHEMICAL: ACEPHATE, IMIDACLOPRID



THRIPS

TREAT IN JUNE. DAYLILIES, FERNS, GARDENIA, AZALEA, DAHLIA, VIBURNUM, FERNS, HIBISCUS, DOGWOOD, PEONY, GLADIOLUS, LILAC, PRIVET, ROSE, RHODODENDRON

ORGANIC: HOT PEPPER WAX, INSECTICIDAL SOAP, AZADIRACTIN, CAPSAICIN, LIME SULFUR, MINERAL OIL, NEEM OIL, POTASSIUM LAURATE, SULFUR

CHEMICAL: ACEPHATE, ACETAMIPRID, AVERMECTIN B1, BETA-CYFLUTHRIN, BIFENTHRIN, CARBARYL, CLOTHIANIDIN, DELTAMETHRIN, DIMETHOATE, ESFENVALERATE, FIPRONIL, FLONICAMID, IMIDACLOPRID, MALATHION, NOVALURON, PERMETHRIN, SPINOSYN A



ROSE CHAFER

TREAT DURING JUNE AND MID-SUMMER.

ADULTS ARE ACTIVE FLYERS AND MOVE CONTINUALLY ONTO SUSCEPTIBLE HOSTS: ROSE, PEONY, BLACKBERRY & BRAMBLES, STRAWBERRY, CRAB APPLES, MOUNTAIN ASH, GRAPE, VIRGINIA CREEPER, SOME BIRCHES.

ORGANIC: AZADIRACTIN PYRETHRINS

CHEMICAL: ACETAMIPRID, CARBARYL, IMIDACLOPRID, LAMBDA CYHALOTHRIN, MALATHION, PERMETHRIN



MOTTLED WILLOW BORER (POPLAR & WILLOW BORER)

TREAT ALL BARK SURFACES IN MID- TO LATE JUNE AND IN LATE AUGUST-EARLY SEPTEMBER.

CHEMICAL: PERMETHRIN, IMIDACLOPRID AS A SOIL DRENCH PRIOR TO INFESTATION.



JAPANESE BEETLES

REMINDER

ORGANIC: PYRETHRIN, SPINOSAN, HAND PICK

CHEMICAL: BIFENTHRIN, MALATHION, ESFENVALERATE, IMIDACLOPRID, PERMETHRIN, CLOTHIANIDIN, DELTAMETHRIN, LAMBDA CYHALOTHRIN, GAMMACYHALOTHRIN, THIAMETHOXAM, ZETA CYPERMETHRIN, ACETAMIPRID, BIFENTHRIN & CLOTHIANIDIN, IMIDACLOPRID & CYFLUTHRIN, PIPERONYL BUTOXIDE & PYRETHRINS, LAMBDA CYHALOTHRIN & THIAMETHOXAM, GAMMACYHALOTHRIN & SPINOSYN A



PEACHTREE BORER

CHERRY, PLUM, PEACH, APRICOT, ALMOND TREES, ENGLISH LAUREL

ORGANIC: AZADIRACTIN

CHEMICAL: BIFENTHRIN

CHLORANTRANILIPROLE, ESFENVALERATE, GAMMACYHALOTHRIN, LAMBDA CYHALOTHRIN, PERMETHRIN, ZETA CYPERMETHRIN, LAMBDA CYHALOTHRIN & CHLORANTRANILIPROLE, PIPERONYL BUTOXIDE & PYRETHRINS
TREAT TRUNKS AND SOIL AROUND THE BASE.